

THE HAVEN

4 BEDROOMS | 2 BATHROOMS | 1,700 SQFT



MODERN ELEVATION

Exterior Features

- Concrete Construction w/ Stucco Finish
- Impact Windows & Doors
- Dimensional Shingles
- Aluminum Soffit & Fascia
- Decorative Paver Driveway, Walkway & Lanai
- Full Landscaping Package w/ Auto Sprinklers

Interior Features

- Grand Ceilings w/ Recessed Trays
- Designer Cabinet Options
- Granite Countertops
- Moen Plumbing Features
- Stainless Steel Appliances
- Flooring Package Options

ALLOWANCES FOR: Permit Fees | Impact Fees | Fill Dirt



TRANSITIONAL ELEVATION



COASTAL ELEVATION

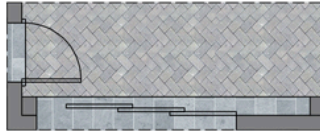
THE HAVEN



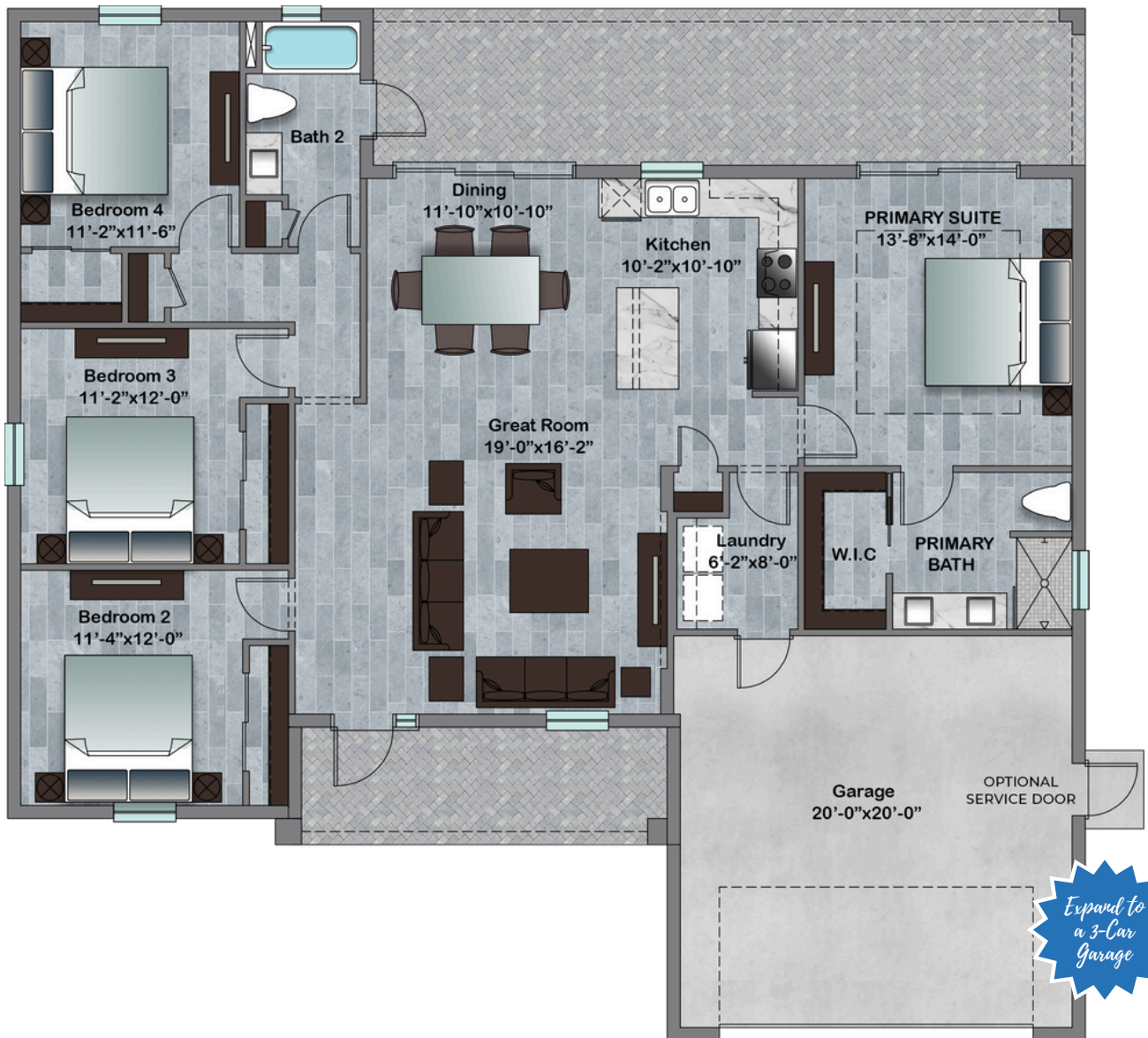
4 BED | 2 BATH | 2-CAR GARAGE | 1,700 SQFT LIVING | 2,543 SQFT TOTAL

Ask About Additional Customization Options And Pool Packages

OPTIONAL SHOWER
IN LIEU OF TUB



OPTIONAL POCKET
SLIDING GLASS DOORS



VISIT OUR SHOWROOM: 2311 Santa Barbara Blvd Suite 111, Cape Coral, FL 33991

Please consult your new home specialist to confirm specific standard features and options available per model as the front elevation and floor plan information shown including pricing, standard features and options may vary from shown. All pricing, standards and options are subject to change at any time without notice or obligation. Drawings, pictures, square footages, floor plans, elevations, features, colors and sizes are approximate for illustration purposes only and will vary from the homes as built.

Color renderings are for artistic purpose only and do not necessarily represent actual color choices or options for interior and/or exterior of model. Artistic renderings are subject to change or refinement over time, square footage totals have been calculated using the engineering method (legal boundaries of the unit) and are subject to change upon final architectural drawings. Home prices refer to the base price of the model and include the vertical construction costs and posted site specific allowances only. Base prices do not include a build-able lot, options, pool packages and/or site specific allowance adjustments unless otherwise indicated.



CGC1526900