



SPOSEN
SIGNATURE HOMES
INTEGRITY • QUALITY • VALUE

The Catalina



The Modern Elevation



The Coastal Elevation



The Transitional Elevation

Living- 2051 sqft.
Total - 2998 sqft.
4 Bedroom - 3 Bath
2 Car Garage

Exterior Features

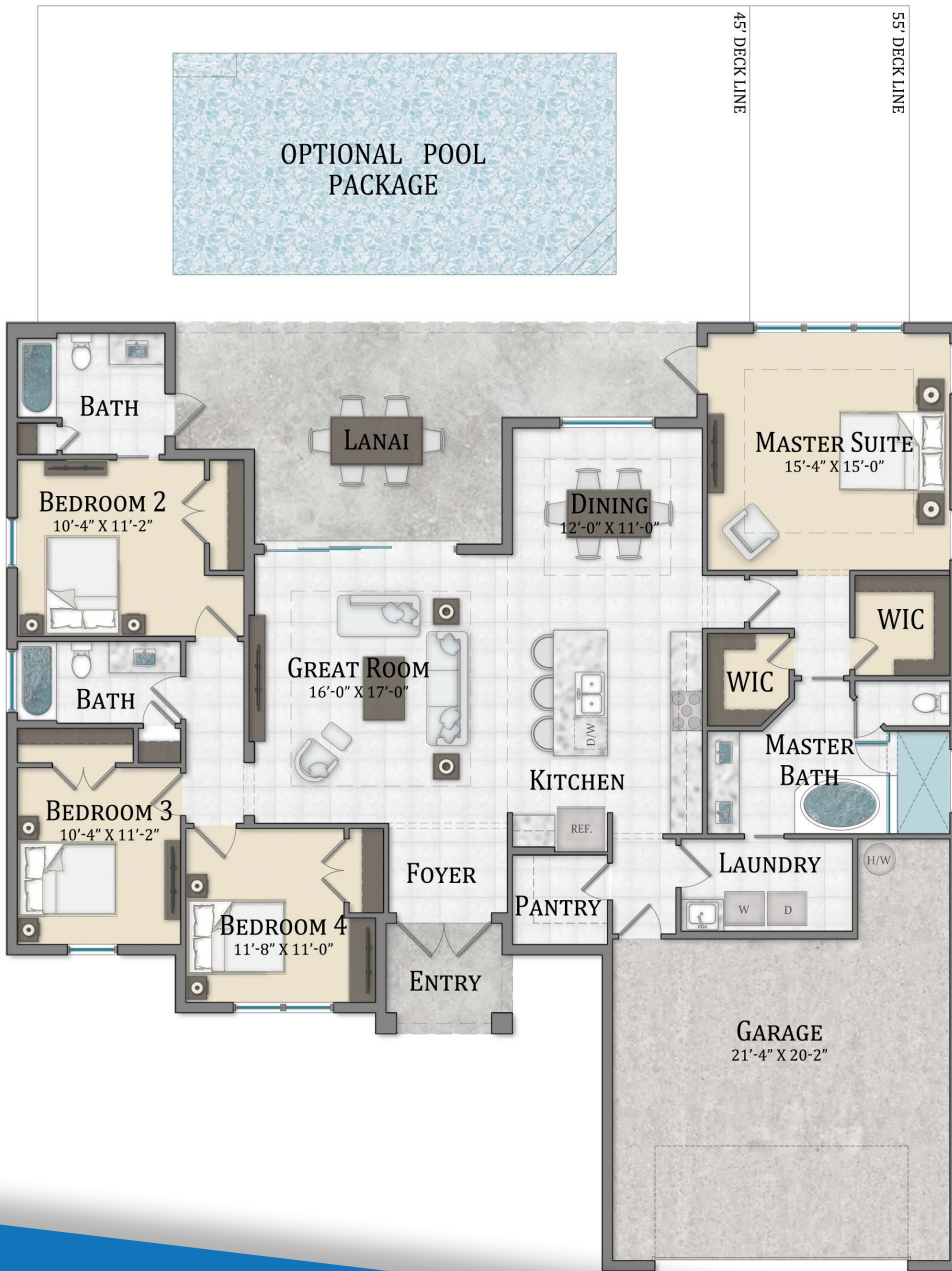
Concrete Construction with Stucco Finish
 Dimensional Shingles
 Aluminum Soffit & Fascia
 Decorative Paver Driveway, Walkway & Lanai
 Full Landscaping Package
 Automated Sprinkler System

Interior Features

Grand Ceilings with Decorative Trays
 Designer Cabinet Options
 Granite Countertops
 Moen Plumbing Features
 Stainless Steel Appliances
 Flooring Package Options

Allowances For

Permit Fees
 Impact Fees
 Fill Dirt



Please consult your new home specialist to confirm specific standard features and options available per model as the front elevation and floor plan information shown including pricing, standard features and options may vary from shown. All pricing, standards and options are subject to change at any time without notice or obligation. Drawings, pictures, square footages, floor plans, elevations, features, colors and sizes are approximate for illustration purposes only and will vary from the homes as built. Color renderings are for artistic purpose only and do not necessarily represent actual color choices or options for interior and/or exterior of model. Artistic renderings are subject to change or refinement over time, square footage totals have been calculated using the engineering method (legal boundaries of the unit) and are subject to change upon final architectural drawings. Home prices refer to the base price of the model and include the vertical construction costs and posted site specific allowances only. Base prices do not include a build-able lot, options, pool packages and/or site specific allowance adjustments unless otherwise indicated. All rights reserved. ©2023 Sposen Signature Homes.

